

# Process and Reality (diagrams)

The S.P.A.C.E consortium

2020-11-17

## Contents

<b>some diagrams</b>	<b>2</b>
general flow . . . . .	2
a more detailed flow . . . . .	3
a more detailed flow (P&R terms) . . . . .	4
a more detailed parallel flow . . . . .	5
dot flow (test) . . . . .	6
<b>notes (etc+)</b>	<b>7</b>

## some diagrams

There is urgency in coming to see the world as a web of interrelated processes of which we are integral parts, so that all of our choices and actions have consequences for the world around us.

—Alfred North Whitehead

## general flow

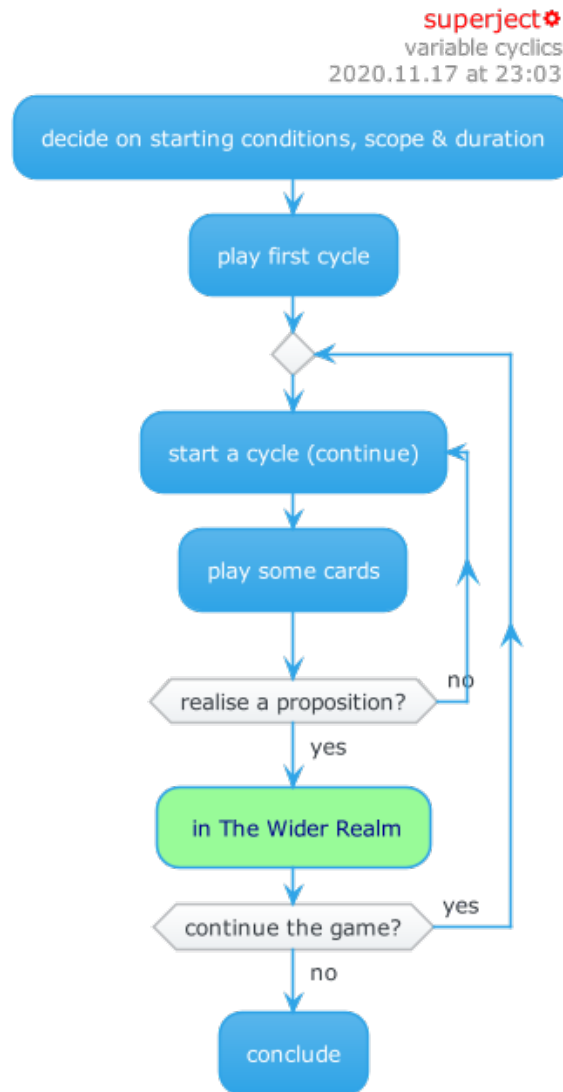


Figure 1: overview of game flow

# a more detailed flow

superject   
variable cyclics  
2020.11.17 at 23:03

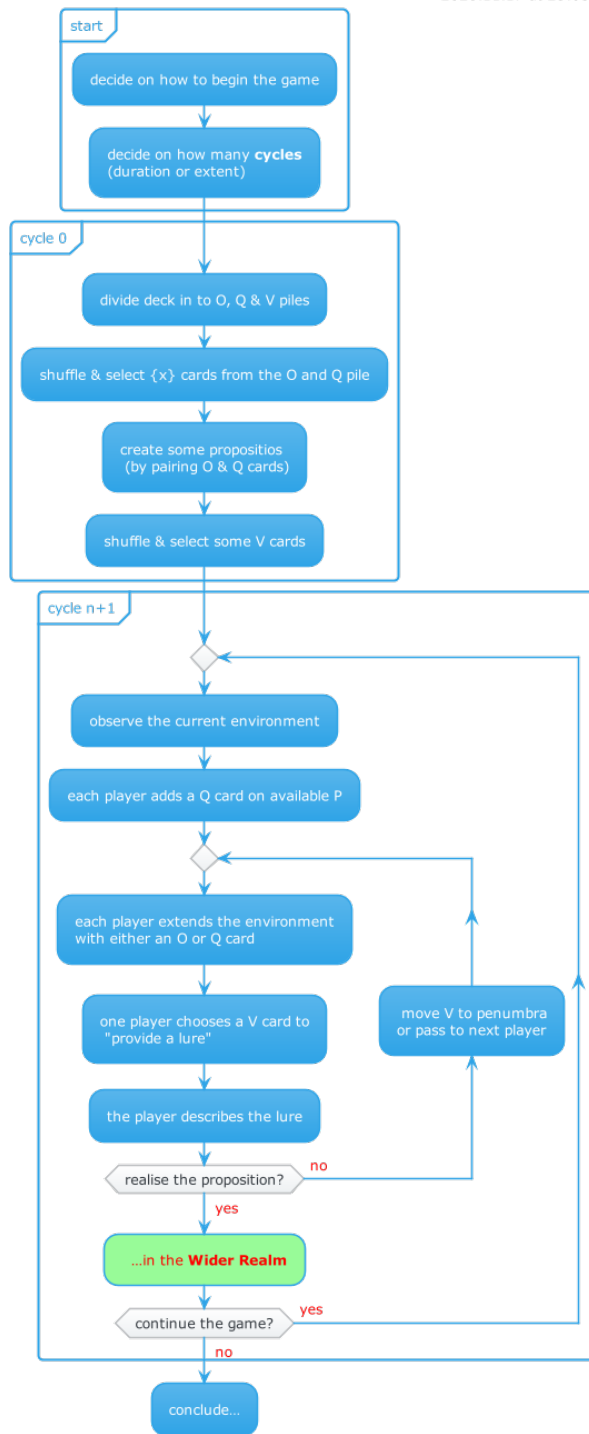


Figure 2: a more detailed game flow

# a more detailed flow (P&R terms)

superject   
 variable cyclics  
 2020.11.17 at 23:03

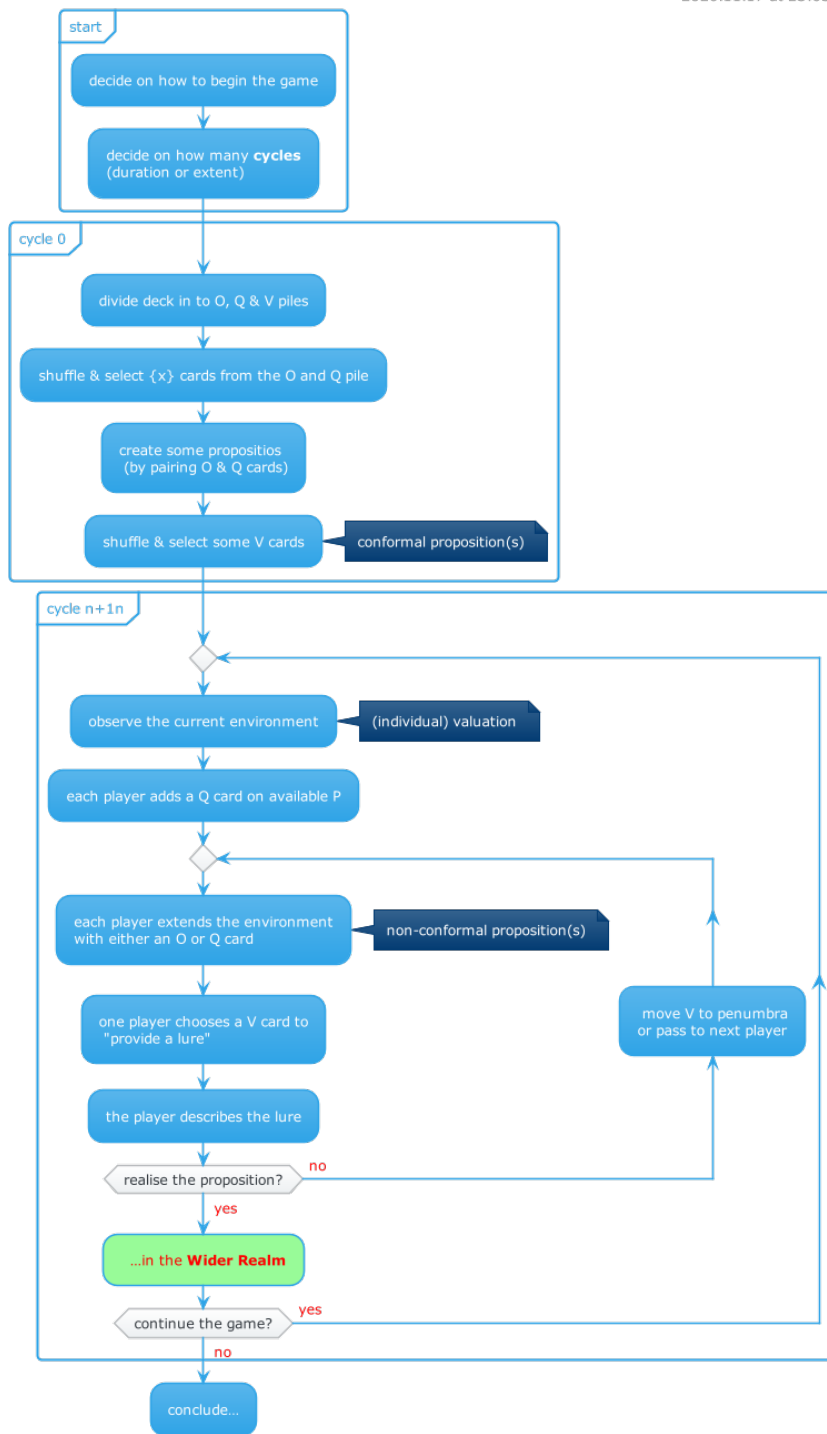


Figure 3: a more detailed game flow (P&R terminology)

# a more detailed parallel flow



Figure 4: a more detailed, parallel flow

## dot flow (test)

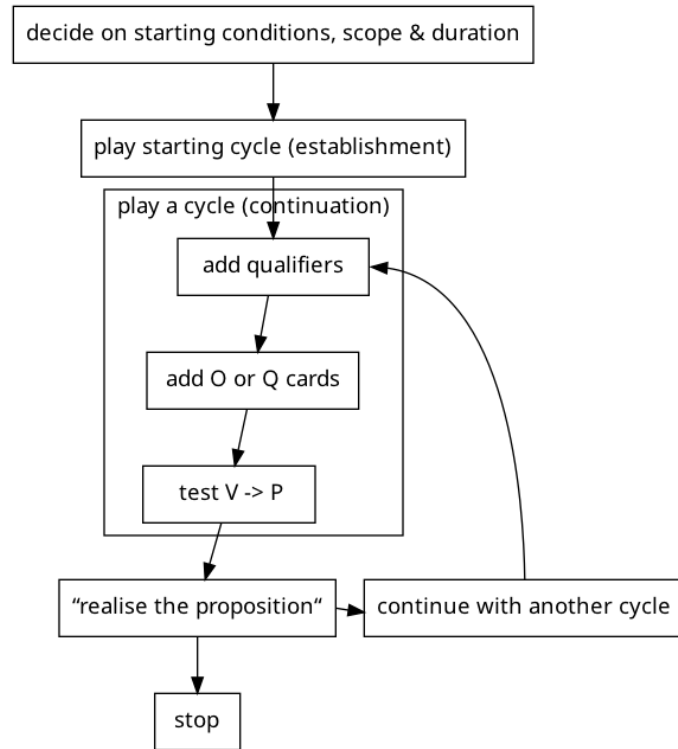


Figure 5: dot test

## notes (etc+)

### plantuml references

- <https://plantuml.com/state-diagram>
- <https://plantuml.com/activity-diagram-beta>
- <https://bschwarz.github.io/puml-themes/rolling.html>